

ACCOUNTABILITY REVIEW COUNCIL

Report to the School Reform Commission

The Status of 2006-2007 Academic Performance in the
School District of Philadelphia

Appendix A

Comparing Philadelphia PSSA Results to Those of Pennsylvania Percentage
Advanced or Proficient and Percentage Point Changes

Sheet 1: Grades 3–5

Sheet 2: Grades 6–8, 11

**Comparing Philadelphia PSSA Results to Those of Pennsylvania
Percentage Advanced or Proficient and Percentage Point Changes**

Grade 3 Math

	2002	2003	2004	2005	2006	2007	Chge 02-07	Chge 06-07
Phila	N/A	N/A	N/A	52.0%	59.0%	52.2%	N/A	-6.8%
PA	N/A	N/A	N/A	81.3%	83.0%	78.5%	N/A	-4.5%
Diff	N/A	N/A	N/A	29.3%	24.0%	26.3%	N/A	-2.3%

Grade 3 Reading

	2002	2003	2004	2005	2006	2007	Chge 02-07	Chge 06-07
Phila	N/A	N/A	N/A	37.2%	42.0%	46.4%	N/A	4.4%
PA	N/A	N/A	N/A	68.0%	69.0%	72.8%	N/A	3.8%
Diff	N/A	N/A	N/A	-30.8%	-27.0%	-26.4%	N/A	0.6%

Grade 4 Math

	2002	2003	2004	2005	2006	2007	Chge 02-07	Chge 06-07
Phila	N/A	N/A	N/A	N/A	51.3%	52.9%	N/A	1.6%
PA	N/A	N/A	N/A	N/A	77.3%	78.0%	N/A	0.7%
Diff	N/A	N/A	N/A	N/A	-26.0%	-25.1%	N/A	0.9%

Grade 4 Reading

	2002	2003	2004	2005	2006	2007	Chge 02-07	Chge 06-07
Phila	N/A	N/A	N/A	N/A	36.1%	42.8%	N/A	6.7%
PA	N/A	N/A	N/A	N/A	68.1%	70.1%	N/A	2.0%
Diff	N/A	N/A	N/A	N/A	-32.0%	-27.3%	N/A	4.7%

Grade 5 Math

	2002	2003	2004	2005	2006	2007	Chge 02-07	Chge 06-07
Phila	18.7%	23.1%	30.7%	45.8%	41.6%	44.6%	25.9%	3.0%
PA	53.1%	56.3%	61.8%	69.0%	66.9%	71.0%	17.9%	4.1%
Diff	-34.4%	-33.2%	-31.1%	-23.2%	-25.3%	-26.4%	8.0%	-1.1%

Grade 5 Reading

	2002	2003	2004	2005	2006	2007	Chge 02-07	Chge 06-07
Phila	20.8%	23.4%	31.6%	35.1%	31.6%	32.0%	11.2%	0.4%
PA	57.0%	58.0%	62.7%	64.2%	60.6%	59.9%	2.9%	-0.7%
Diff	-36.2%	-34.6%	-31.1%	-29.1%	-29.0%	-27.9%	8.3%	1.1%

**Comparing Philadelphia PSSA Results to Those of Pennsylvania
Percentage Advanced or Proficient and Percentage Point Changes**

Grade 6 Math

	2002	2003	2004	2005	2006	2007	Chge 02-07	Chge 06-07
Phila	N/A	N/A	N/A	N/A	40.6%	46.8%	N/A	6.2%
PA	N/A	N/A	N/A	N/A	68.0%	69.6%	N/A	1.6%
Diff	N/A	N/A	N/A	N/A	-27.4%	-22.8%	N/A	4.6%

Grade 6 Reading

	2002	2003	2004	2005	2006	2007	Chge 02-07	Chge 06-07
Phila	N/A	N/A	N/A	N/A	35.6%	36.7%	N/A	1.1%
PA	N/A	N/A	N/A	N/A	65.9%	63.5%	N/A	-2.4%
Diff	N/A	N/A	N/A	N/A	-30.3%	-26.8%	N/A	3.5%

Grade 7 Math

	2002	2003	2004	2005	2006	2007	Chge 02-07	Chge 06-07
Phila	N/A	N/A	N/A	N/A	39.4%	40.1%	N/A	0.7%
PA	N/A	N/A	N/A	N/A	66.4%	67.2%	N/A	0.8%
Diff	N/A	N/A	N/A	N/A	-24.4%	-27.1%	N/A	-0.1%

Grade 7 Reading

	2002	2003	2004	2005	2006	2007	Chge 02-07	Chge 06-07
Phila	N/A	N/A	N/A	N/A	39.4%	40.7%	N/A	1.3%
PA	N/A	N/A	N/A	N/A	68.0%	66.8%	N/A	-1.2%
Diff	N/A	N/A	N/A	N/A	-27.0%	-26.1%	N/A	2.5%

Grade 8 Math

	2002	2003	2004	2005	2006	2007	Chge 02-07	Chge 06-07
Phila	17.9%	19.7%	30.8%	39.4%	37.0%	43.9%	26.0%	6.9%
PA	51.7%	51.3%	57.9%	62.9%	62.2%	67.9%	16.2%	5.7%
Diff	-33.8%	-31.6%	-27.1%	-23.5%	-25.2%	-24.0%	9.8%	1.2%

Grade 8 Reading

	2002	2003	2004	2005	2006	2007	Chge 02-07	Chge 06-07
Phila	24.1%	30.4%	41.2%	39.6%	44.5%	49.2%	25.1%	4.7%
PA	58.8%	63.4%	69.9%	64.1%	70.6%	75.0%	16.2%	4.4%
Diff	-34.7%	-33.0%	-28.7%	-24.5%	-26.1%	-25.8%	8.9%	0.3%

Grade 11 Math

	2002	2003	2004	2005	2006	2007	Chge 02-07	Chge 06-07
Phila	23.6%	21.6%	22.9%	23.1%	26.9%	30.9%	7.3%	4.0%
PA	49.6%	49.1%	49.1%	50.9%	52.0%	53.7%	4.1%	1.7%
Diff	-26.0%	-27.5%	-26.2%	-27.8%	-25.1%	-22.8%	3.2%	2.3%

Grade 11 Reading

	2002	2003	2004	2005	2006	2007	Chge 02-07	Chge 06-07
Phila	28.7%	30.1%	26.8%	30.7%	33.1%	34.9%	6.2%	1.8%
PA	59.0%	59.2%	60.8%	65.0%	65.1%	65.4%	6.4%	0.3%
Diff	-30.3%	-29.1%	-34.0%	-34.3%	-32.0%	-30.5%	-0.2%	1.5%

ACCOUNTABILITY REVIEW COUNCIL

Report to the School Reform Commission

The Status of 2006-2007 Academic Performance in the
School District of Philadelphia

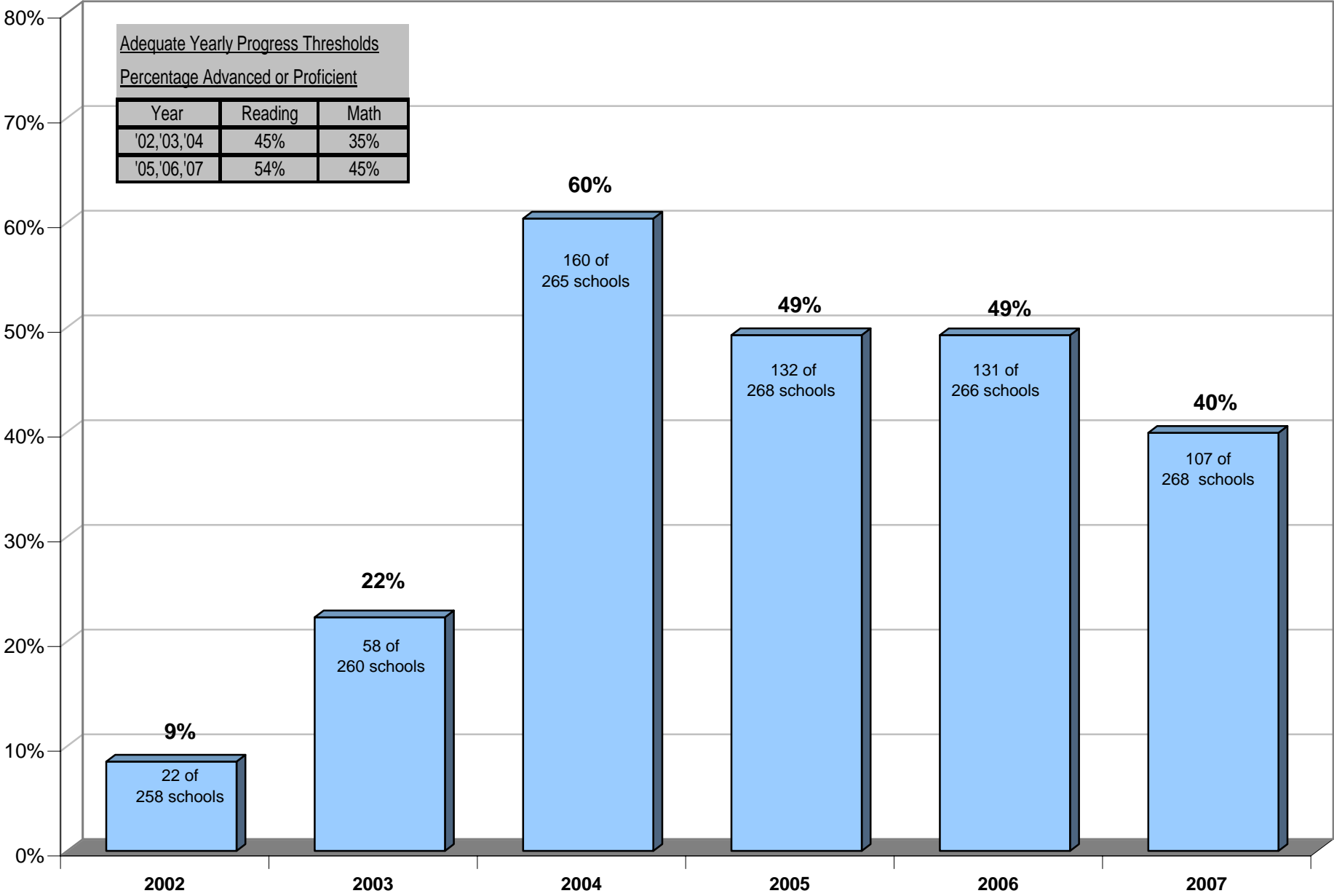
Appendix B

Number and Percentage of Schools Making AYP 2002–2007

Sheet 1: School District of Philadelphia

School District of Philadelphia

Number and Percentage of Schools Making AYP 2002–2007



<u>Adequate Yearly Progress Thresholds</u>		
<u>Percentage Advanced or Proficient</u>		
Year	Reading	Math
'02,'03,'04	45%	35%
'05,'06,'07	54%	45%

*Grade 3 results counted for first time in 2006; grades 4, 6 & 7 were counted in 2007 for the first time.

ACCOUNTABILITY REVIEW COUNCIL

Report to the School Reform Commission

The Status of 2006-2007 Academic Performance in the
School District of Philadelphia

Appendix C

School District of Philadelphia – Comparison of Percentage of Students Advanced or Proficient by Group

Sheet 1: Comparison of Percentage of Students Advanced or Proficient by Group – Math

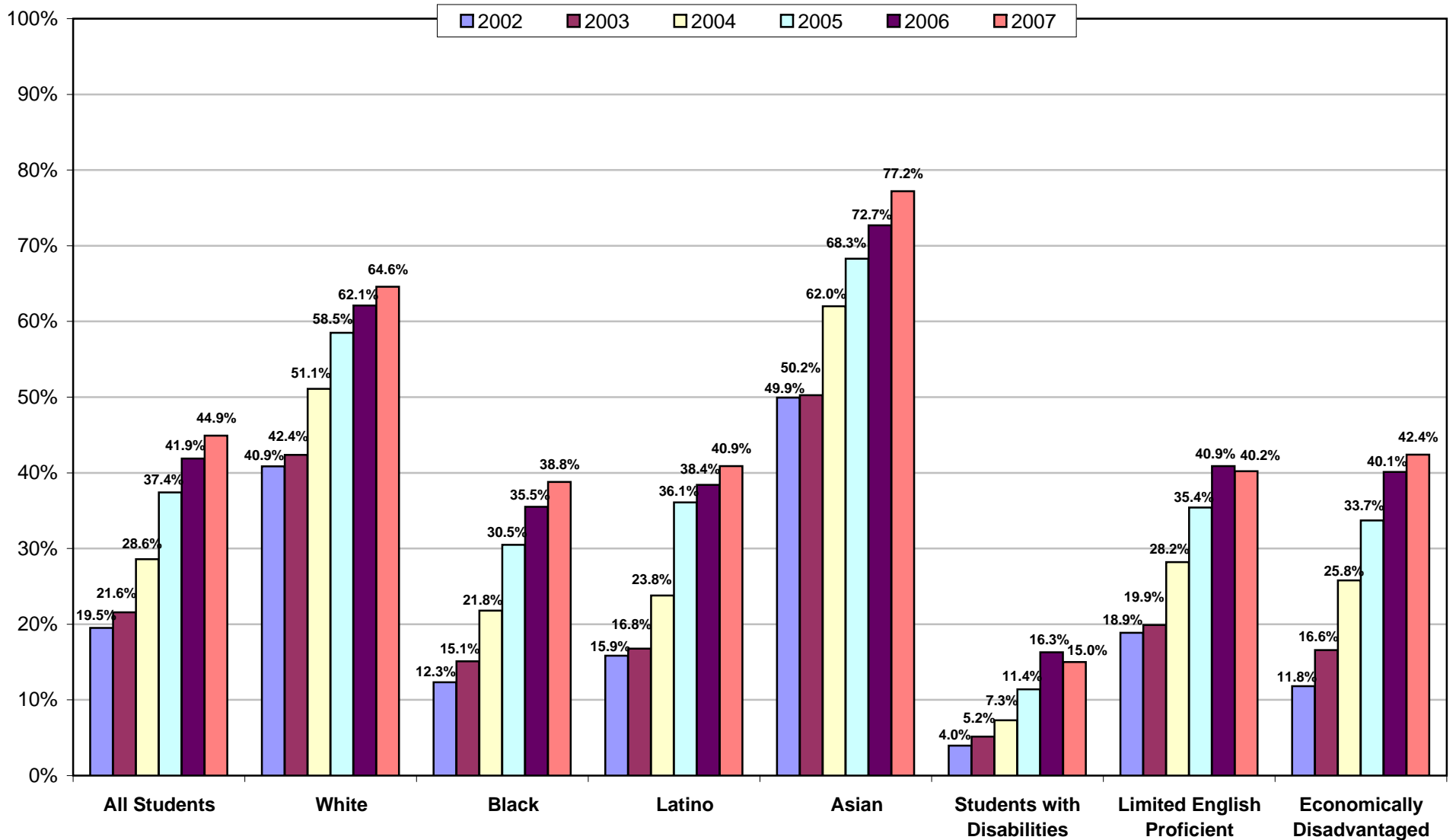
Sheet 2: Comparison of Percentage of Students Advanced or Proficient by Group – Reading

Sheet 3: Achievement Gap by Percentage of Students Advanced or Proficient by Group – Math

Sheet 4: Achievement Gap by Percentage of Students Advanced or Proficient by Group– Reading

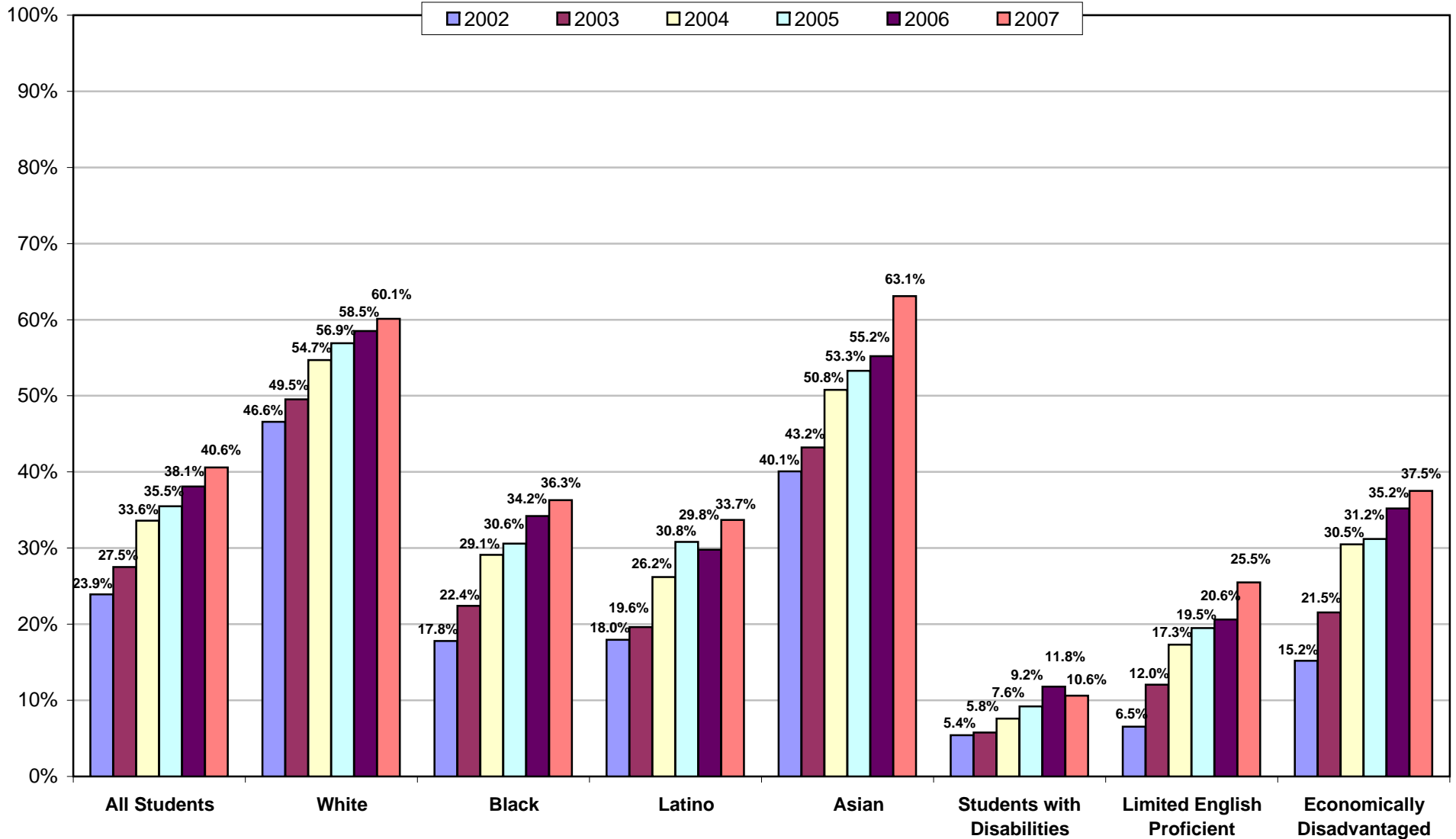
School District of Philadelphia
2002-2007 PSSA Results
Comparison of Percentage of Students Advanced or Proficient by Group
All Grades Combined
Math

*Grades used for AYP purposes.
Some tested grades in 2005 and 2006 not included.



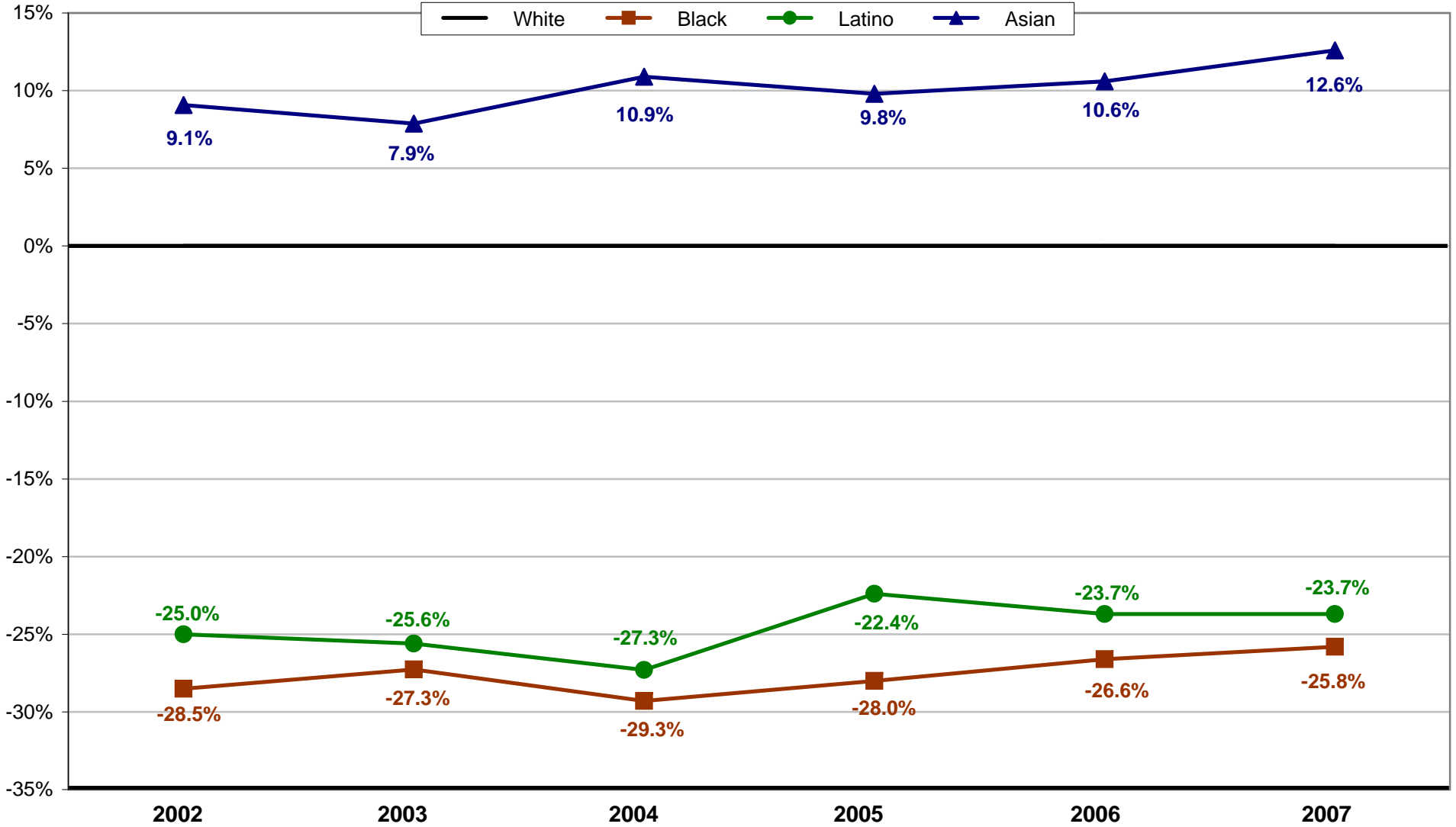
School District of Philadelphia
2002-2007 PSSA Results
Comparison of Percentage of Students Advanced or Proficient by Group
All Grades Combined
Reading

*Grades used for AYP purposes.
Some tested grades in 2005 and 2006 not included.



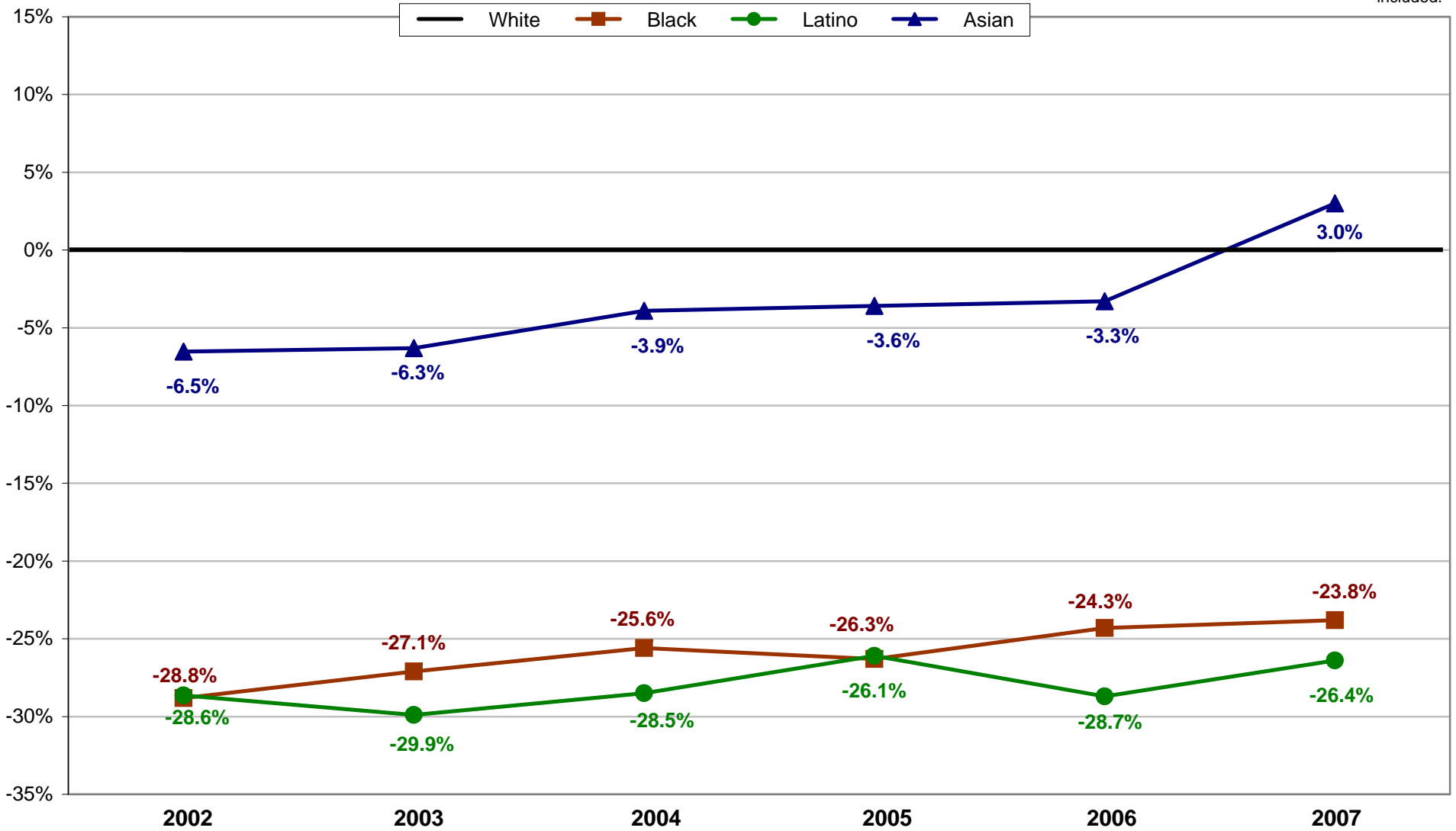
School District of Philadelphia
 2002-2007 PSSA Results
Achievement Gap by Percentage of Students Advanced or Proficient by Group
All Grades Combined
Math

*Grades used for AYP purposes.
 Some tested grades in 2005 and 2006 not included.



School District of Philadelphia
 2002-2007 PSSA Results
Achievement Gap by Percentage of Students Advanced or Proficient by Group
All Grades Combined
Reading

*Grades used for AYP purposes.
 Some tested grades in 2005 and 2006 not included.



ACCOUNTABILITY REVIEW COUNCIL

Report to the School Reform Commission

The Status of 2006-2007 Academic Performance in the
School District of Philadelphia

Appendix D

Subgroups Per School

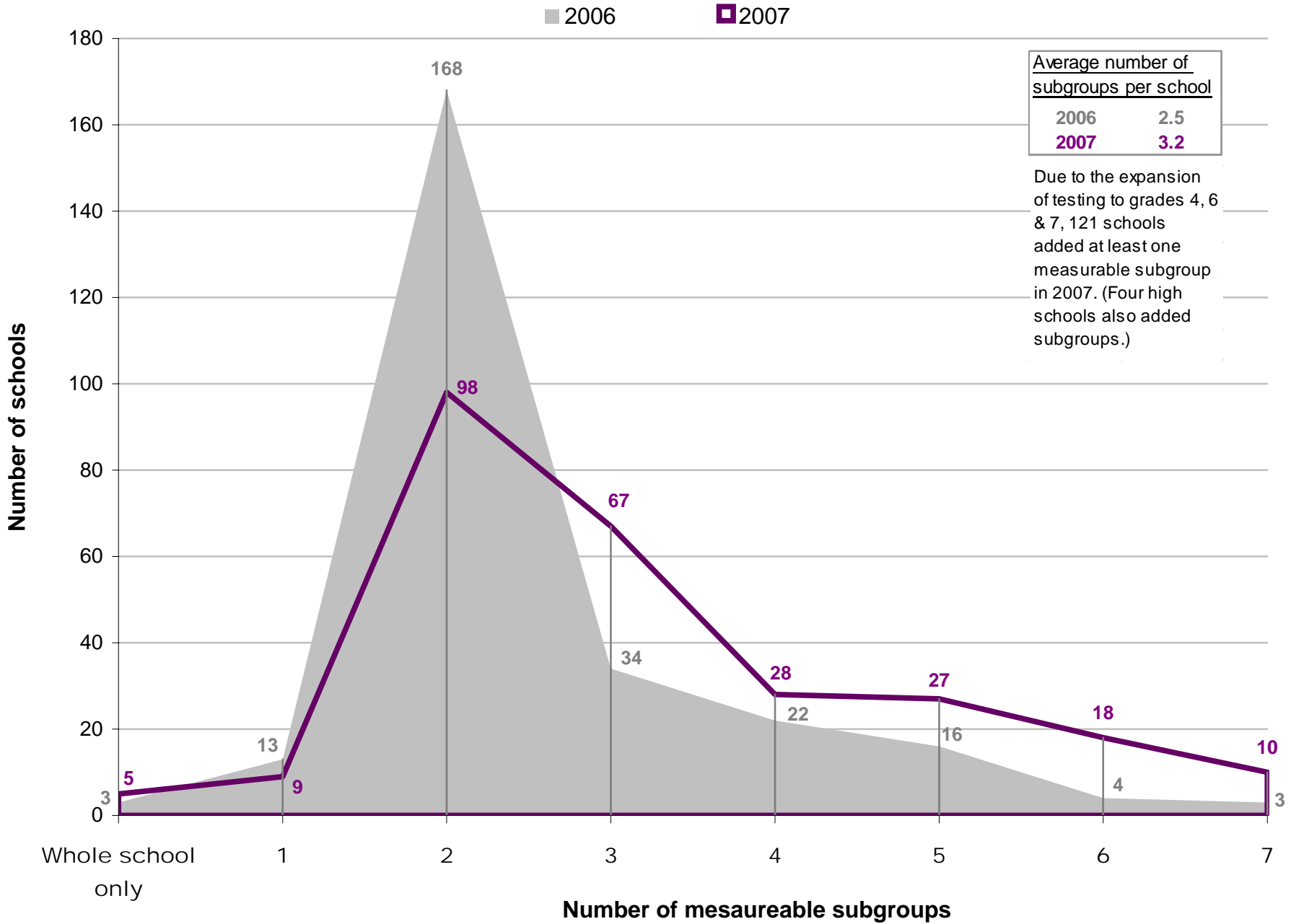
Sheet 1: School District of Philadelphia

Sheet 2: EMO Schools

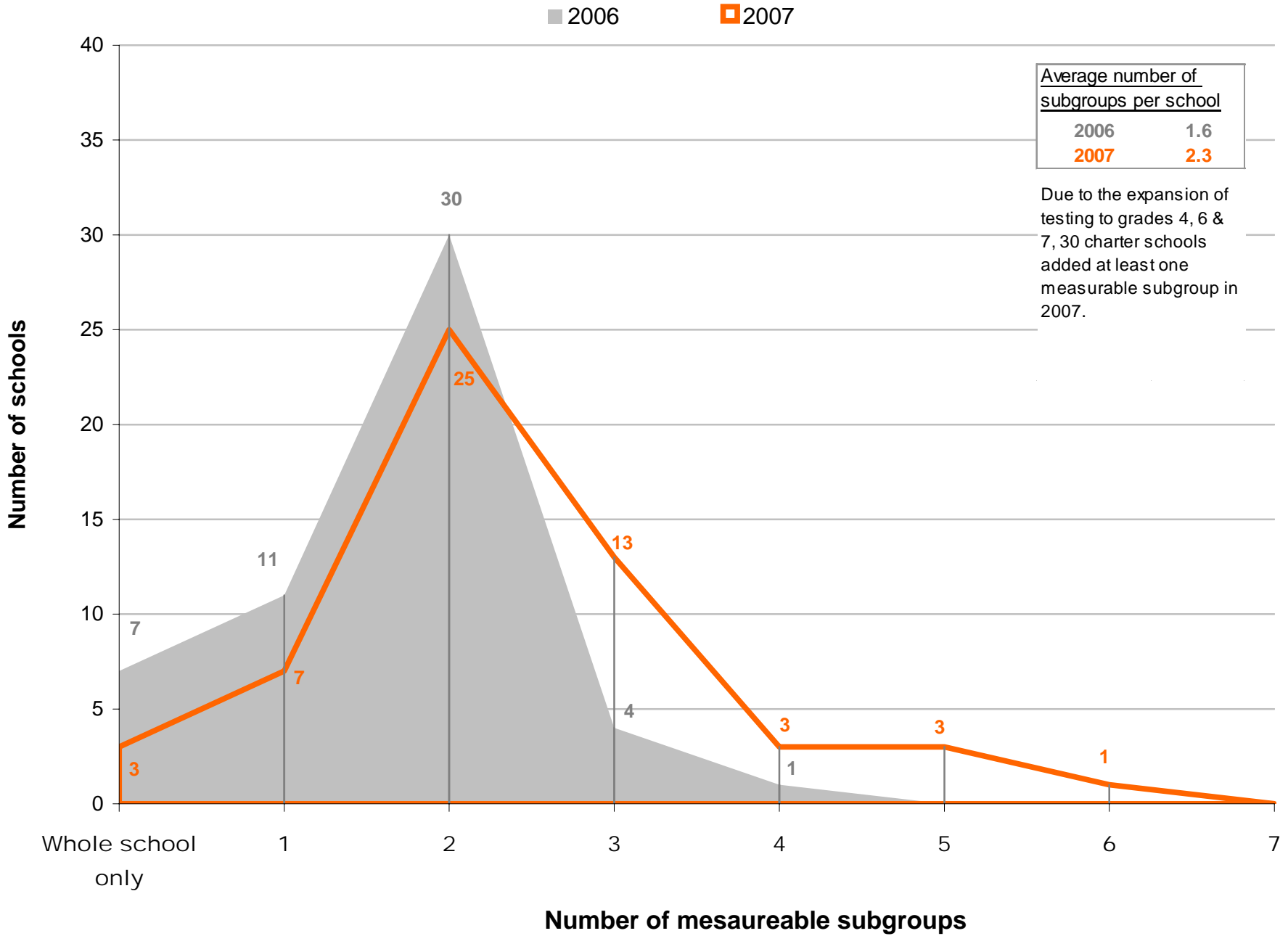
Sheet 3: Charter Schools in Philadelphia

Sheet 4: AYP by Subgroup Count 2007

Number of Subgroups per School School District of Philadelphia

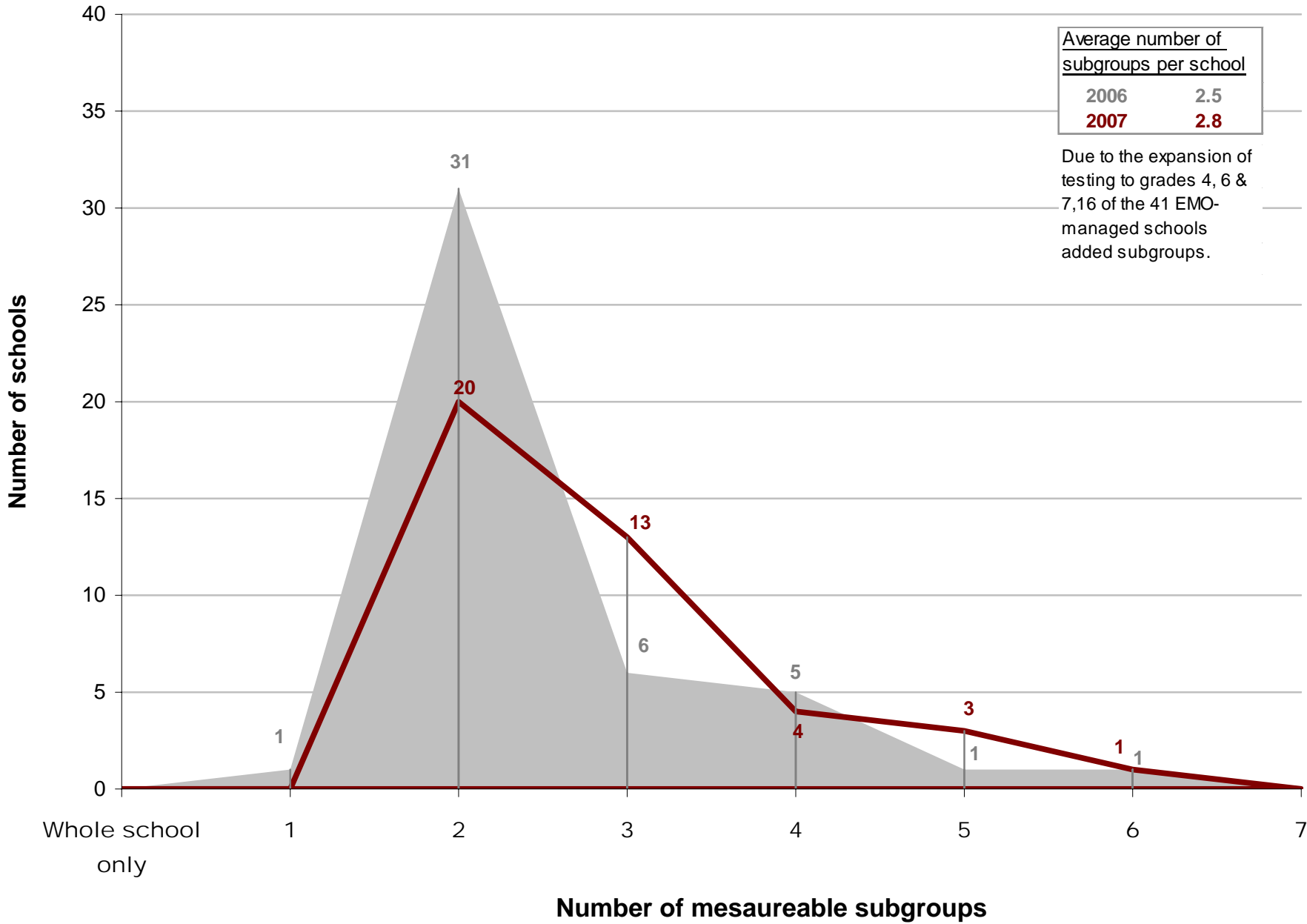


Number of Subgroups per School Charter Schools in Philadelphia

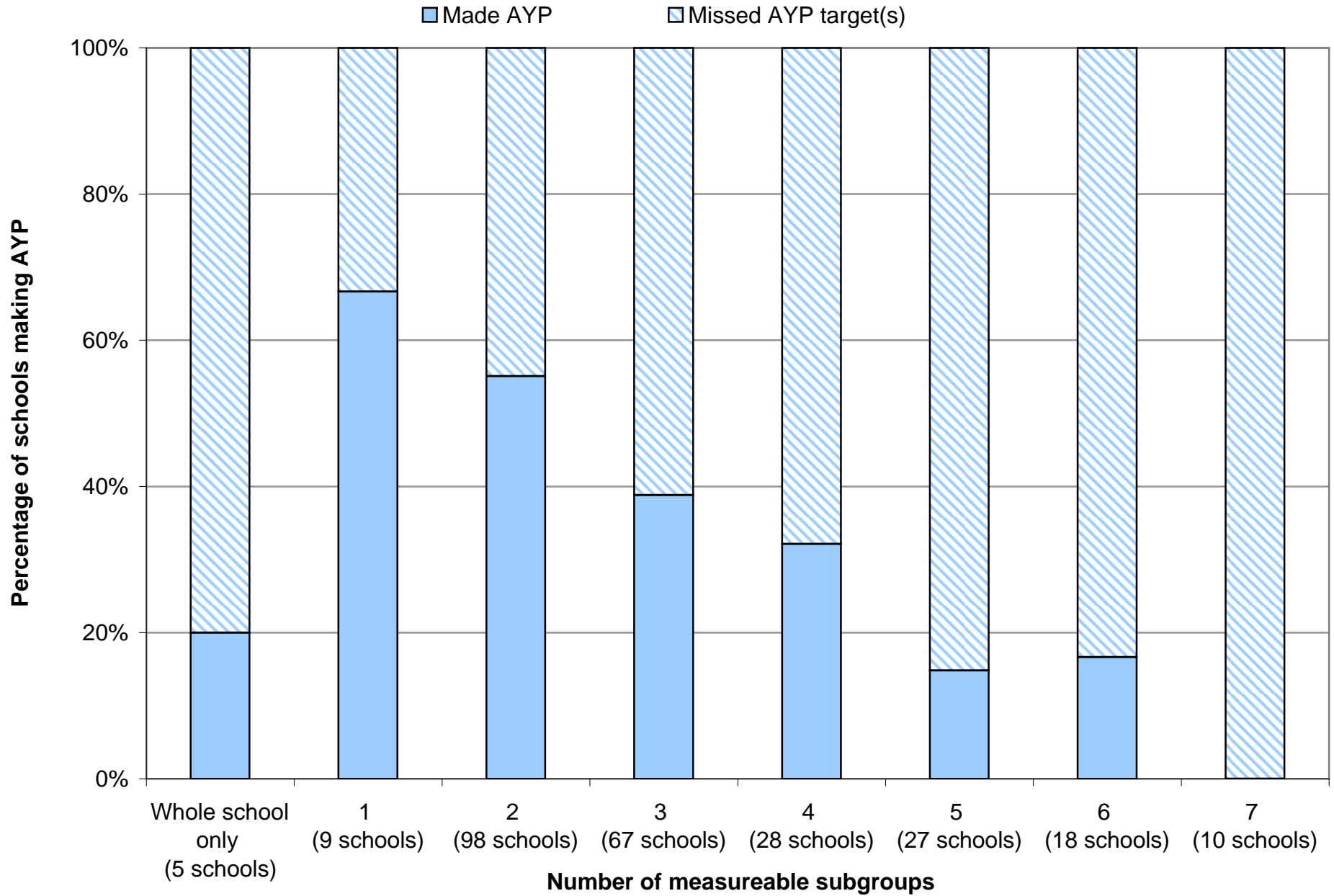


Number of Subgroups per School EMO-Managed Schools

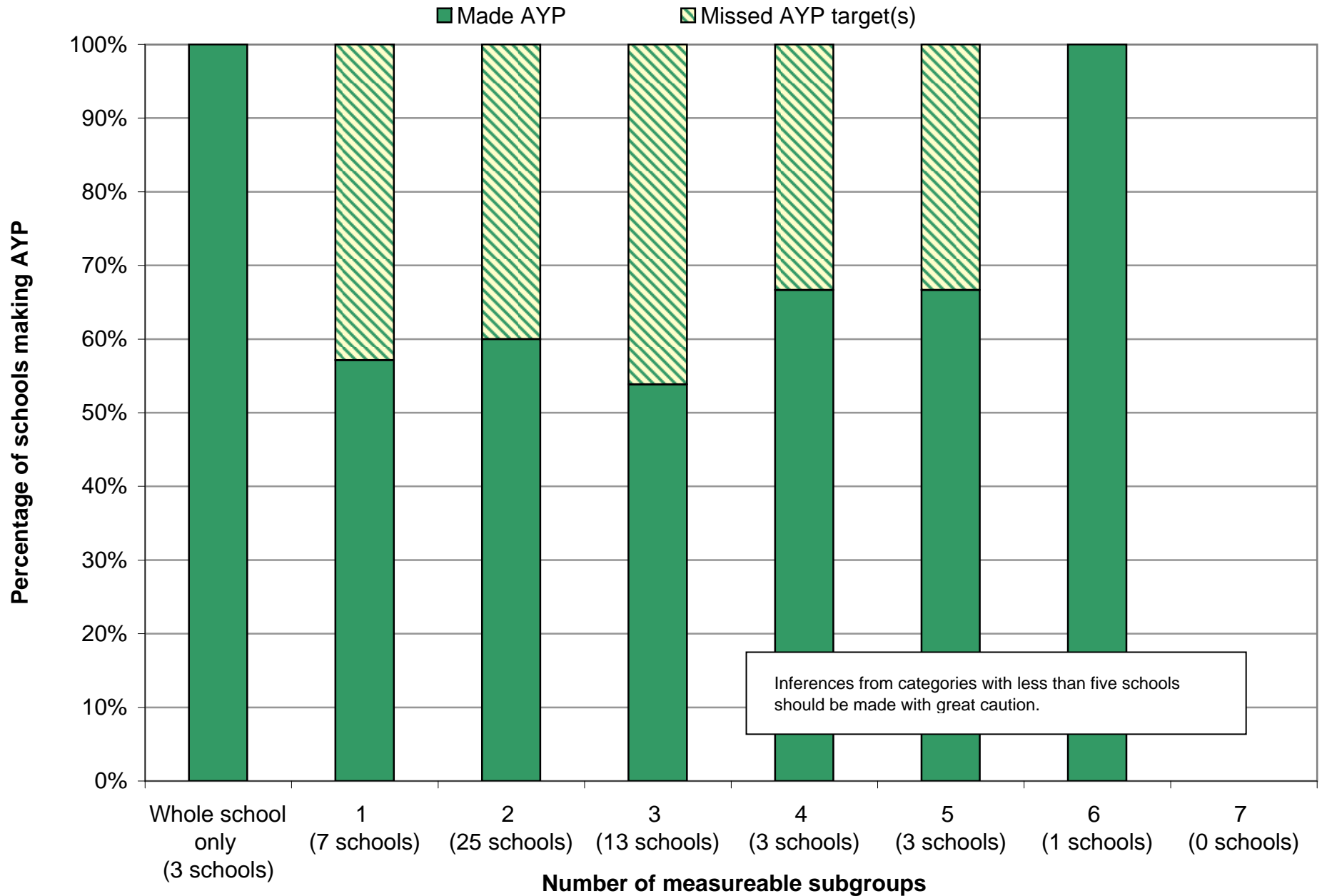
■ 2006 ■ 2007



AYP by Subgroup Count 2007 School District of Philadelphia



AYP by Subgroup Count Philadelphia Charter Schools



ACCOUNTABILITY REVIEW COUNCIL

Report to the School Reform Commission

The Status of 2006-2007 Academic Performance in the
School District of Philadelphia

Appendix E

PSSA Results by Management Type

Sheet 1: Percentage of Students Advanced or Proficient by Group – Math [Table]

Sheet 2: Percentage of Students Advanced or Proficient by Group – Reading [Table]

Sheet 3: Percentage of Students Advanced or Proficient by Group – Math [Chart]

Sheet 4: Percentage of Students Advanced or Proficient by Group – Reading [Chart]

Sheet 5: Comparison of Original PSSA Tested Grades (5,8,11)

PSSA Results by Management Type

Math

Percentage of Students Advanced or Proficient

	2002	2003	2004	2005	2006	2007	Change 02-07	Change 06-07
ALL PUBLIC	19.4%	21.1%	28.0%	37.3%	41.6%	44.9%	25.5%	3.3%
CHARTER SCHOOLS	16.0%	18.0%	23.4%	29.9%	40.1%	45.0%	29.0%	4.9%
ALL SDP	19.6%	21.3%	28.5%	37.4%	41.8%	44.9%	25.3%	3.1%
DISTRICT-MANAGED	22.8%	23.8%	31.5%	40.7%	45.8%	48.3%	25.5%	2.5%
ALL E.M.O.s	6.9%	7.8%	15.3%	24.7%	26.5%	28.9%	22.0%	2.4%
EDISON	6.3%	6.9%	16.6%	27.4%	28.0%	29.7%	23.4%	1.7%
FOUNDATIONS	9.9%	13.4%	15.1%	19.2%	23.6%	26.3%	16.4%	2.7%
PENN	9.5%	15.4%	13.2%	30.6%	31.9%	41.3%	31.8%	9.4%
TEMPLE	5.1%	6.1%	9.8%	17.2%	35.3%	31.7%	26.6%	-3.6%
UNIVERSAL	9.2%	5.5%	15.3%	19.4%	27.3%	32.3%	23.1%	5.0%
VICTORY	5.5%	7.1%	16.7%	21.3%	17.8%	23.4%	17.9%	5.6%

- 'ALL PUBLIC' includes all District-managed, EMO-managed and charter schools
- 'CHARTER SCHOOLS' includes all charter schools
- 'ALL SDP' includes all District-managed and EMO-managed schools
- 'DISTRICT-MANAGED' includes District schools not run by EMOs

Grades 4, 6, and 7 are incorporated for the first time in the Combined column in 2007.

Grade 3 is incorporated for the first time in the Combined column in 2006.

Results by EMO can vary significantly on an annual basis as some EMOs manage a small number of schools and EMOs can add or lose schools

NOTES:

Universal has less than 30 students in Grade 3,

Penn has less than 100 students per grade.

PSSA Results by Management Type

Reading

Percentage of Students Advanced or Proficient

	2002	2003	2004	2005	2006	2007	Change 02-07	Change 06-07
ALL PUBLIC	23.9%	27.9%	33.7%	36.0%	38.6%	41.5%	17.6%	2.9%
CHARTER SCHOOLS	24.1%	29.4%	33.8%	35.3%	42.7%	46.7%	22.6%	4.0%
ALL SDP	23.9%	27.7%	33.6%	35.5%	38.0%	40.6%	16.7%	2.6%
DISTRICT-MANAGED	27.2%	30.7%	36.6%	39.3%	41.7%	44.0%	16.8%	2.3%
ALL E.M.O.s	10.9%	11.7%	20.7%	22.0%	22.8%	24.5%	13.6%	1.7%
EDISON	10.5%	10.1%	20.7%	21.7%	22.4%	23.7%	13.2%	1.3%
FOUNDATIONS	13.6%	17.5%	19.4%	21.8%	22.7%	24.4%	10.8%	1.7%
PENN	13.1%	15.6%	22.3%	27.2%	30.8%	33.6%	20.5%	2.8%
TEMPLE	9.8%	10.0%	15.7%	16.0%	24.2%	25.9%	16.1%	1.7%
UNIVERSAL	8.6%	7.7%	25.0%	19.2%	25.6%	28.5%	19.9%	2.9%
VICTORY	10.8%	14.6%	24.0%	23.9%	21.5%	23.9%	13.1%	2.4%

- 'ALL PUBLIC' includes all District-managed, EMO-managed and charter schools
- 'CHARTER SCHOOLS' includes all charter schools
- 'ALL SDP' includes all District-managed and EMO-managed schools
- 'DISTRICT-MANAGED' includes District schools not run by EMOs

Grades 4, 6, and 7 are incorporated for the first time in the Combined column in 2007.

Grade 3 is incorporated for the first time in the Combined column in 2006.

Results by EMO can vary significantly on an annual basis as some EMOs manage a small number of schools and EMOs can add or lose schools

NOTES:

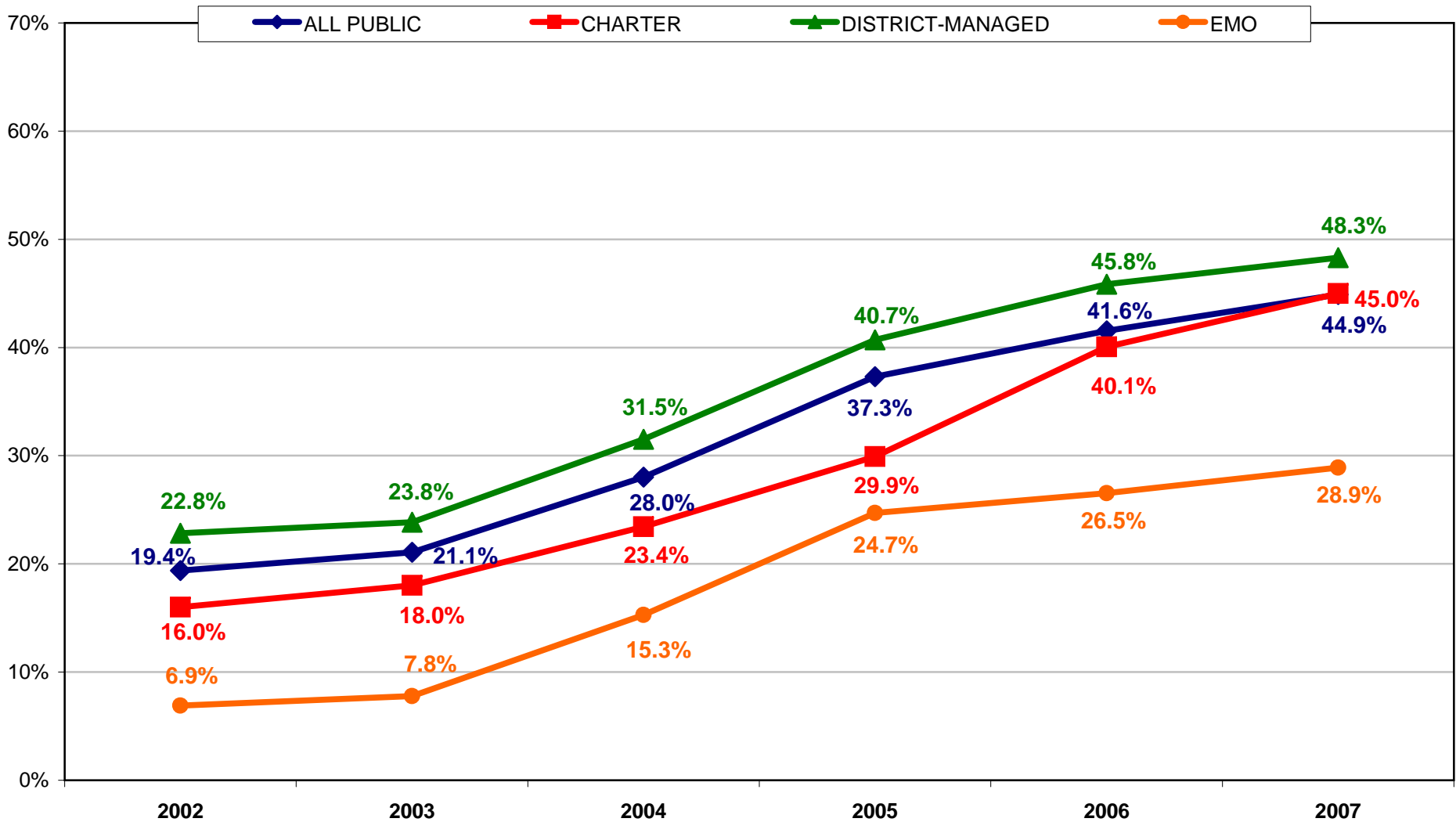
Universal has less than 30 students in Grade 3,

Penn has less than 100 students per grade.

**Public School Students in Philadelphia
2002-2007 PSSA Results by Management Type
All Grades Combined
Math**

Percentage of students proficient or advanced

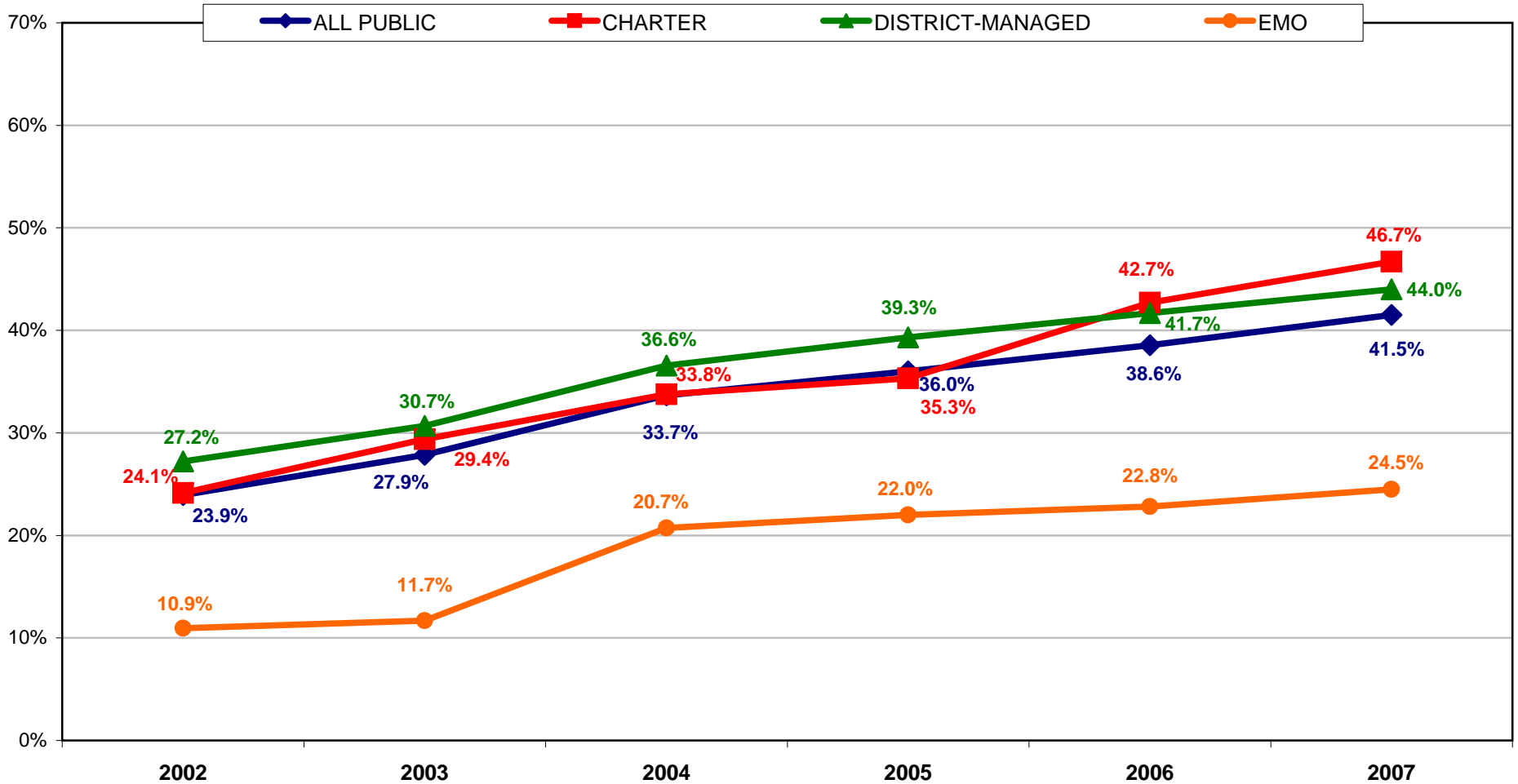
*Grades used for AYP purposes.
Some tested grades in 2005 and 2006 not included.



**Public School Students in Philadelphia
2002-2007 PSSA Results by Management Type
All Grades Combined
Reading**

Percentage of students proficient or advanced

*Grades used for AYP purposes.
Some tested grades in 2005 and 2006 not included.



Comparison of Original PSSA Tested Grades (5,8,11)

CHARTER SCHOOLS

Data for schools with grades served in both 2002 and 2007

(Note: Does not include data for charters that began operation since 2002-03)

MATH

Grade	2002	2003	2004	2005	2006	2007	CHANGE '02-'07
5	18.4%	22.6%	29.9%	40.0%	41.4%	45.6%	27.2%
8	18.1%	18.8%	23.6%	32.3%	34.5%	41.0%	22.8%
11	14.5%	13.4%	23.0%	28.3%	31.0%	40.8%	26.2%

READING

Grade	2002	2003	2004	2005	2006	2007	CHANGE '02-'07
5	24.8%	28.3%	32.1%	38.4%	37.2%	35.0%	10.2%
8	27.3%	35.0%	40.8%	37.7%	47.7%	51.9%	24.6%
11	21.9%	29.0%	37.7%	39.6%	48.4%	54.1%	32.2%

CHARTER SCHOOLS

Data for all charters, regardless of start date

MATH

Grade	2002	2003	2004	2005	2006	2007	CHANGE '02-'07
5	15.9%	21.1%	28.6%	35.7%	38.8%	43.3%	27.4%
8	18.1%	21.8%	23.2%	32.0%	33.9%	43.6%	25.5%
11	12.9%	9.7%	17.0%	20.7%	23.3%	31.0%	18.1%

READING

Grade	2002	2003	2004	2005	2006	2007	CHANGE '02-'07
5	22.5%	26.9%	30.2%	35.1%	35.0%	33.3%	10.8%
8	27.3%	38.9%	41.0%	38.1%	46.2%	56.1%	28.8%
11	22.0%	21.7%	29.6%	32.4%	39.5%	44.1%	22.1%

DISTRICT SCHOOLS

Data for all District schools, regardless of start date

MATH

Grade	2002	2003	2004	2005	2006	2007	CHANGE '02-'07
5	18.8%	23.0%	30.5%	45.8%	41.4%	44.6%	25.8%
8	17.8%	19.6%	30.7%	39.4%	37.0%	43.9%	26.1%
11	23.6%	21.3%	22.7%	23.1%	26.9%	30.9%	7.3%

READING

Grade	2002	2003	2004	2005	2006	2007	CHANGE '02-'07
5	20.8%	23.6%	31.5%	35.1%	31.7%	32.0%	11.2%
8	24.1%	30.6%	41.1%	39.6%	44.5%	49.2%	25.1%
11	28.7%	29.9%	26.9%	30.6%	33.2%	34.9%	6.2%